

DEPARTMENT OF TRANSPORTATION GWINNETT COUNTY

PLAN AND PROFILE OF PROPOSED PLEASANT HILL RD AT BRECKINRIDGE BLVD

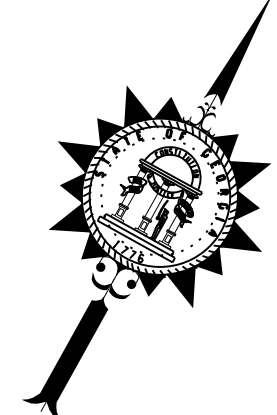
Field Plan Review Meeting: 12-17-2014
Gwinnett County Department of Water Resources (GCDWR) has reviewed the "Utility Plan" sheets of these preliminary plans. GCDWR comments are marked in "RED".



LOCATION MAP

M-0890-01
GWINNETT COUNTY

FEDERAL ROUTE = N/A
STATE ROUTE = N/A



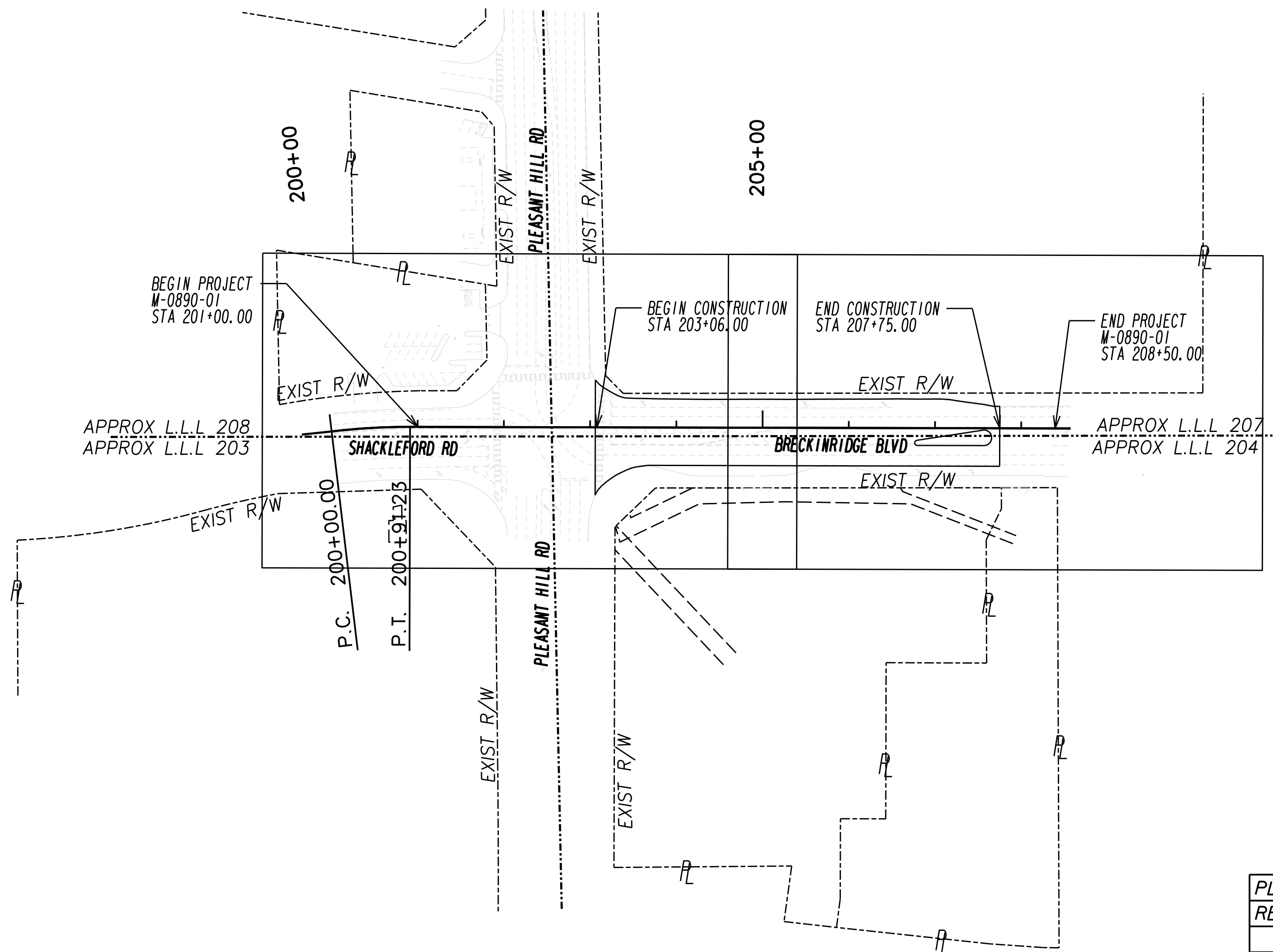
THIS PROJECT HAS BEEN PREPARED USING THE HORIZONTAL GEORGIA COORDINATE SYSTEM OF 1984 (NAD 1983)/94 WEST ZONE, AND THE NORTH AMERICAN VERTICAL DATUM (NAVD) OF 1988.

DESIGN DATA:
ROADWAY CLASS: URBAN COLLECTOR STREET
TRAFFIC A. D. T. (2015): 16760
TRAFFIC A. D. T. (2025): 19070
PERCENT TRUCKS: 2.0%
SPEED DESIGN: 35 MPH
POSTED SPEED: 35 MPH

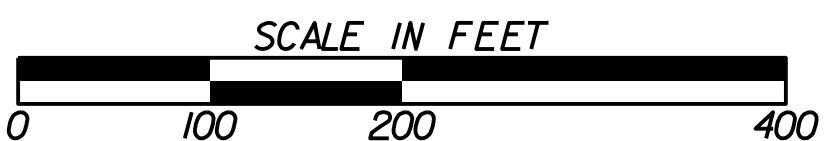
NEW ASSETS	
NET LENGTH OF NEW TRAVEL LANES:	0 LF
NET LENGTH OF NEW TURN LANES:	658 LF
NET LENGTH OF NEW BRIDGE LANES:	0 LF
NET LENGTH OF NEW CURB & GUTTER:	0 LF
NET LENGTH OF NEW SIDEWALK:	0 LF
NET LENGTH OF NEW FIBER OPTIC CABLE:	0 LF
NET LENGTH OF NEW GUARDRAIL:	0 LF
NEW TRAFFIC SIGNALS:	0 EA

LENGTH OF PROJECT	GWINNETT COUNTY No. 135
	Project No. M-0890-01
	MILES
NET LENGTH OF ROADWAY	0.142
NET LENGTH OF BRIDGES	0.000
NET LENGTH OF PROJECT	0.142
NET LENGTH OF EXCEPTIONS	0.000
GROSS LENGTH OF PROJECT	0.142

PROJECT TO BE CONSTRUCTED AS PER GEORGIA DEPARTMENT OF TRANSPORTATION STANDARD SPECIFICATIONS, 2013 EDITION, AS APPROVED BY THE FEDERAL HIGHWAY ADMINISTRATION AND AS MODIFIED BY CONTRACT DOCUMENTS.



3715 NORTHSIDE PARKWAY, NW
200 NORTHCREEK, SUITE 800
ATLANTA, GEORGIA 30327



PLANS COMPLETED:	
REVISIONS (DATE AND SHEET NO.)	

THE DATA, TOGETHER WITH ALL OTHER INFORMATION SHOWN ON THESE PLANS OR IN ANYWAY INDICATED THEREBY, WHETHER BY DRAWINGS OR NOTES, OR IN ANY OTHER MANNER, ARE BASED UPON FIELD INVESTIGATIONS AND ARE BELIEVED TO BE INDICATIVE OF ACTUAL CONDITIONS. HOWEVER, THE SAME ARE SHOWN AS INFORMATION ONLY, ARE NOT GUARANTEED, AND DO NOT BIND THE DEPARTMENT OF TRANSPORTATION IN ANY WAY. THE ATTENTION OF BIDDER IS SPECIFICALLY DIRECTED TO SUBSECTIONS 102.04, 102.05, AND 104.03 OF THE SPECIFICATIONS.

UTILITY CELLS

EXISTING	PROPOSED	TEMPORARY	EXISTING	PROPOSED	TEMPORARY
			MISC.		
				LIMITS OF OVERHEAD AND SUBSURFACE UTILITY INVESTIGATION	
				TEST HOLE	
				END OF INFORMATION	
				QUALITY LEVEL (QL) DELINEATION	
				POLE ID	
				SANITARY SEWER MANHOLE (SSMH) ID	

TELEPHONE PAIR SIZE	TELEPHONE CABLE DIAMETER
5 - 100	0.50 TO 2.00 IN
101 - 2400	UP TO 3.50 IN



UTILITY LINES

EXISTING OVERHEAD	OVERHEAD TO BE REMOVED	PROPOSED OVERHEAD	TYPE OF UTILITY
			ELECTRIC
			ELECTRIC/TELECOMMUNICATIONS
			ELECTRIC/CABLE TV
			ELECTRIC/TRAFFIC CONTROL
			ELECTRIC/TELECOMMUNICATIONS/CABLE TV
			ELECTRIC/TELECOMMUNICATIONS/CABLE TV/TRAFFIC CONTROL
			ELECTRIC/CABLE TV/TRAFFIC CONTROL
			ELECTRIC/TELECOMMUNICATIONS/TRAFFIC CONTROL
			GUY WIRE
			TELECOMMUNICATIONS
			TELECOMMUNICATIONS/TRAFFIC CONTROL
			TELECOMMUNICATIONS/CABLE TV/TRAFFIC CONTROL
			TELECOMMUNICATIONS/CABLE TV
			CABLE TV
			CABLE TV/TRAFFIC CONTROL
			TRAFFIC CONTROL
EXISTING UNDERGROUND	UNDERGROUND TO BE REMOVED	PROPOSED UNDERGROUND	TYPE OF UTILITY
			ELECTRIC (OL-D)
			ELECTRIC (OL-C)
			ELECTRIC (OL-B)
			TELECOMMUNICATIONS (OL-D)
			TELECOMMUNICATIONS (OL-C)
			TELECOMMUNICATIONS (OL-B)
			CABLE TV (OL-D)
			CABLE TV (OL-C)
			CABLE TV (OL-B)
			WATER (OL-D)
			WATER (OL-C)
			WATER (OL-B)
			WATER FOR LABELED PIPE SIZES (OL-D)
			WATER FOR LABELED PIPE SIZES (OL-C)
			WATER FOR LABELED PIPE SIZES (OL-B)
			NON-POTABLE WATER (OL-D)
			NON-POTABLE WATER (OL-C)
			NON-POTABLE WATER (OL-B)
			NON-POTABLE WATER FOR LABELED PIPE SIZES (OL-D)
			NON-POTABLE WATER FOR LABELED PIPE SIZES (OL-C)
			NON-POTABLE WATER FOR LABELED PIPE SIZES (OL-B)
			STEAM (OL-D)
			STEAM (OL-C)
			STEAM (OL-B)
			STEAM FOR LABELED PIPE SIZES (OL-D)
			STEAM FOR LABELED PIPE SIZES (OL-C)
			STEAM FOR LABELED PIPE SIZES (OL-B)
			SANITARY SEWER WITH FLOW DIRECTION (OL-D)
			SANITARY SEWER WITH FLOW DIRECTION (OL-C)
			SANITARY SEWER WITH FLOW DIRECTION (OL-B)
			SANITARY SEWER WITH FLOW DIRECTION FOR LABELED PIPE SIZES (OL-D)
			SANITARY SEWER WITH FLOW DIRECTION FOR LABELED PIPE SIZES (OL-C)
			SANITARY SEWER WITH FLOW DIRECTION FOR LABELED PIPE SIZES (OL-B)
			SANITARY SEWER FORCE MAIN WITH FLOW DIRECTION (OL-D)
			SANITARY SEWER FORCE MAIN WITH FLOW DIRECTION (OL-C)
			SANITARY SEWER FORCE MAIN WITH FLOW DIRECTION (OL-B)
			GAS (OL-D)
			GAS (OL-C)
			GAS (OL-B)
			GAS FOR LABELED PIPE SIZES (OL-D)
			GAS FOR LABELED PIPE SIZES (OL-C)
			GAS FOR LABELED PIPE SIZES (OL-B)
			PETROLEUM (OL-D)
			PETROLEUM (OL-C)
			PETROLEUM (OL-B)
			PETROLEUM FOR LABELED PIPE SIZES (OL-D)
			PETROLEUM FOR LABELED PIPE SIZES (OL-C)
			PETROLEUM FOR LABELED PIPE SIZES (OL-B)
			TRAFFIC CONTROL (OL-D)
			TRAFFIC CONTROL (OL-C)
			TRAFFIC CONTROL (OL-B)
			UNKNOWN UTILITY FOUND IN SUE INVESTIGATION (OL-B)



3715 NORTHSIDE PARKWAY, NW
 200 NORTHCREEK, SUITE 800
 ATLANTA, GEORGIA 30327

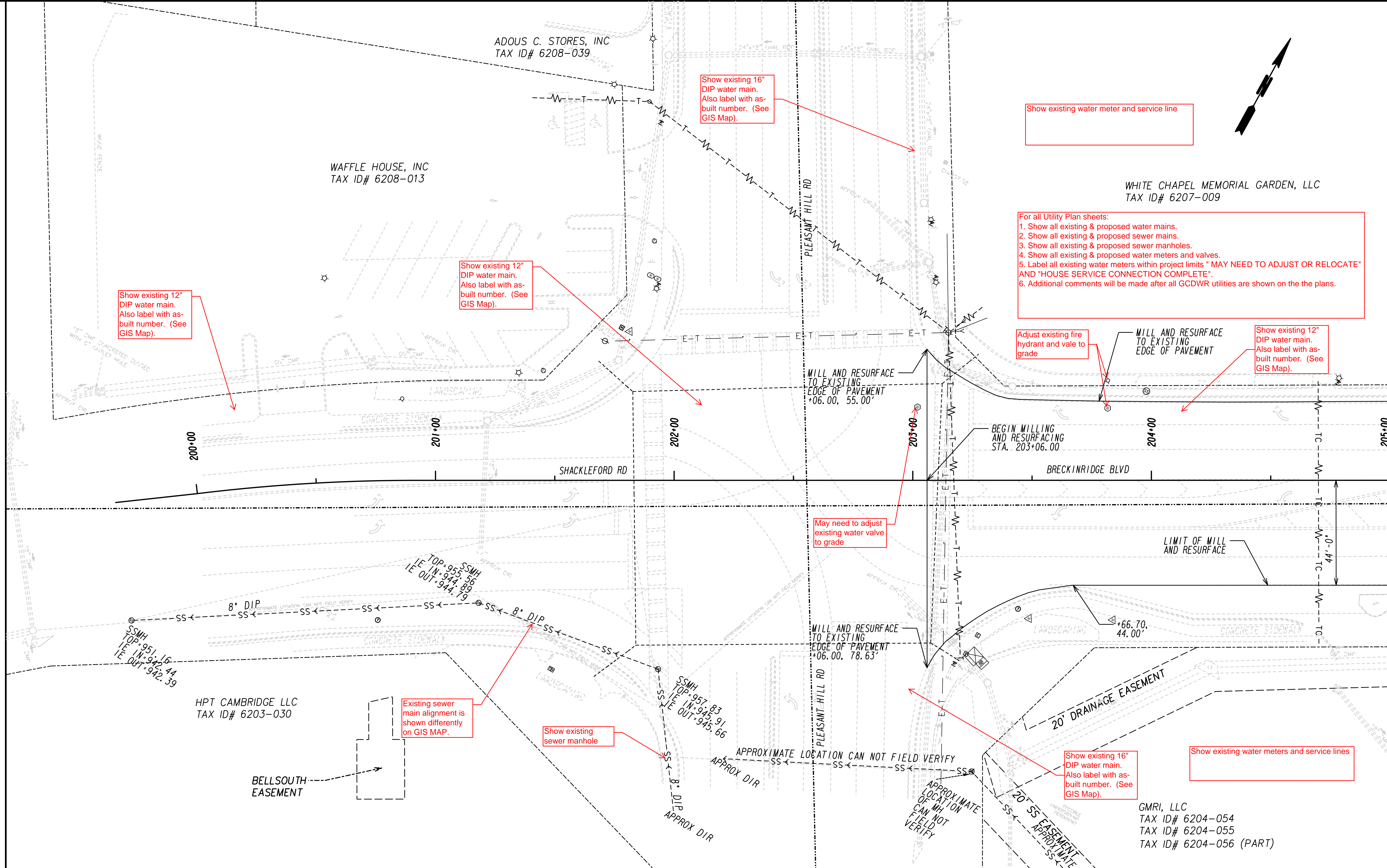
REVISION DATES

GWINNETT COUNTY
 DEPARTMENT OF TRANSPORTATION

UTILITY PLANS

PLEASANT HILL RD AT BRECKINRIDGE BLVD

DRAWING No.
24-000



Show existing water meter and service line

Show existing 12" DIP water main. Also label with as-built number. (See GIS Map).

Show existing 12" DIP water main. Also label with as-built number. (See GIS Map).

Show existing 16" DIP water main. Also label with as-built number. (See GIS Map).

For all Utility Plan sheets:
 1. Show all existing & proposed water mains.
 2. Show all existing & proposed sewer mains.
 3. Show all existing & proposed sewer manholes.
 4. Show all existing & proposed water meters and valves.
 5. Label all existing water meters within project limits * MAY NEED TO ADJUST OR RELOCATE* AND "HOUSE SERVICE CONNECTION COMPLETE".
 6. Additional comments will be made after all GCDWR utilities are shown on the the plans.

Adjust existing fire hydrant and valve to grade

MILL AND RESURFACE TO EXISTING EDGE OF PAVEMENT

Show existing 12" DIP water main. Also label with as-built number. (See GIS Map).

May need to adjust existing water valve to grade

MILL AND RESURFACE TO EXISTING EDGE OF PAVEMENT

Existing sewer main alignment is shown differently on GIS MAP.

Show existing sewer manhole

Show existing 16" DIP water main. Also label with as-built number. (See GIS Map).

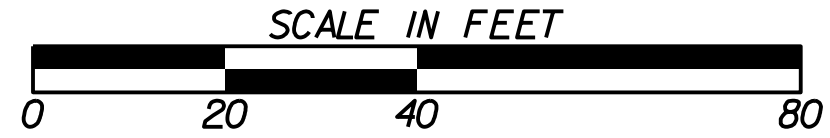
Show existing water meters and service lines

GMRI, LLC
 TAX ID# 6204-054
 TAX ID# 6204-055
 TAX ID# 6204-056 (PART)

MATCH LINE STA. 205+00
DRAWING 24-002



3715 NORTHSIDE PARKWAY, NW
 200 NORTHCREEK, SUITE 800
 ATLANTA, GEORGIA 30327



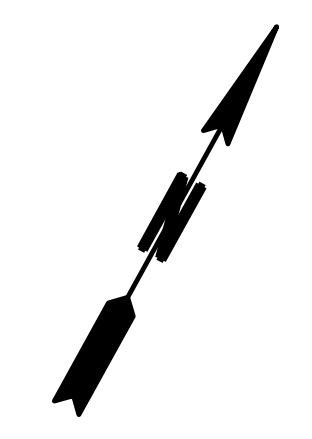
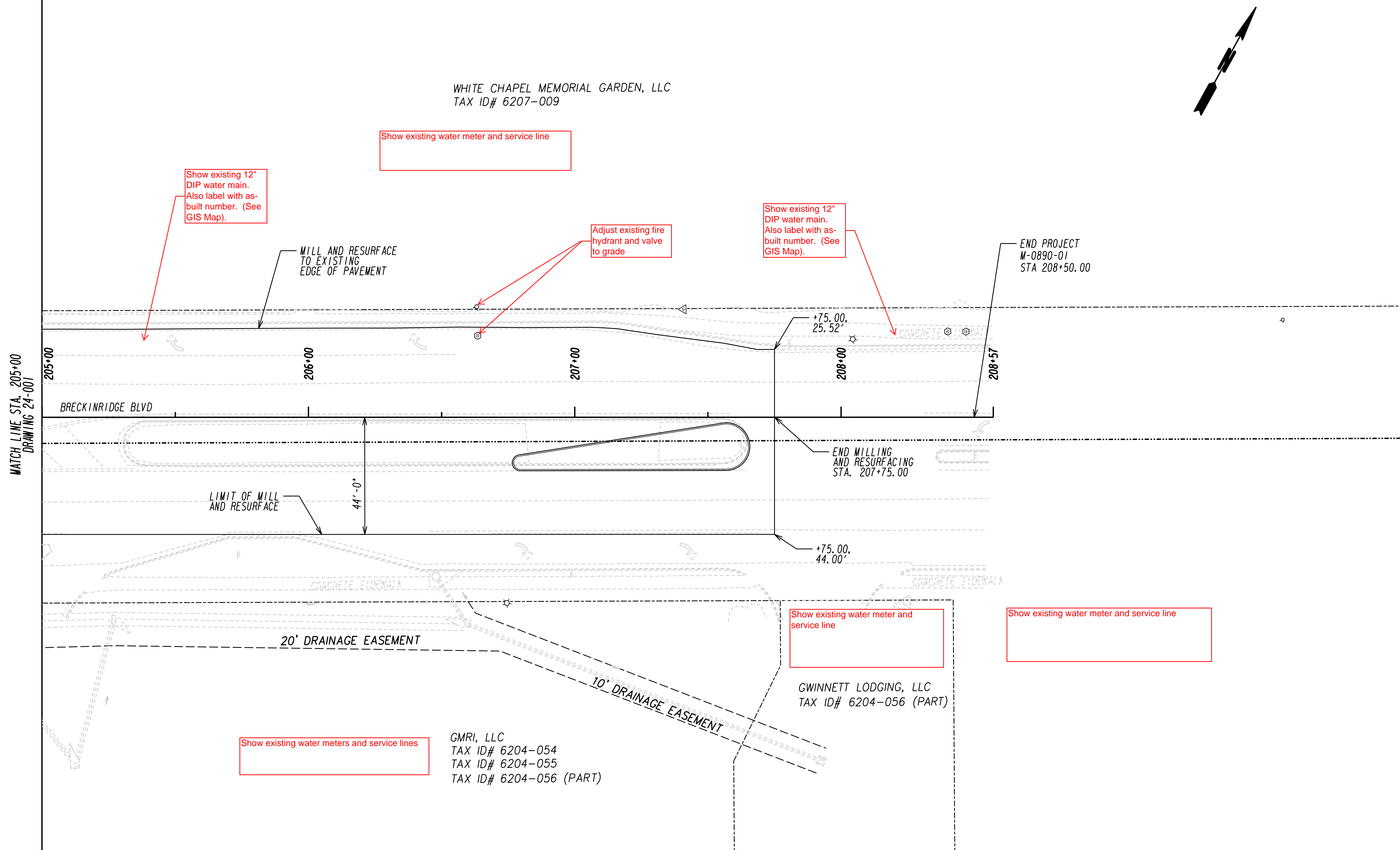
REVISION DATES

GWINNETT COUNTY
 DEPARTMENT OF TRANSPORTATION

UTILITY PLANS

PLEASANT HILL RD AT BRECKINRIDGE BLVD

DRAWING No.
24-001



3715 NORTHSIDE PARKWAY, NW
200 NORTHCREEK, SUITE 800
ATLANTA, GEORGIA 30327



REVISION DATES	

GWINNETT COUNTY
DEPARTMENT OF TRANSPORTATION

UTILITY PLANS

PLEASANT HILL RD AT BRECKINRIDGE BLVD

DRAWING No.
24-002